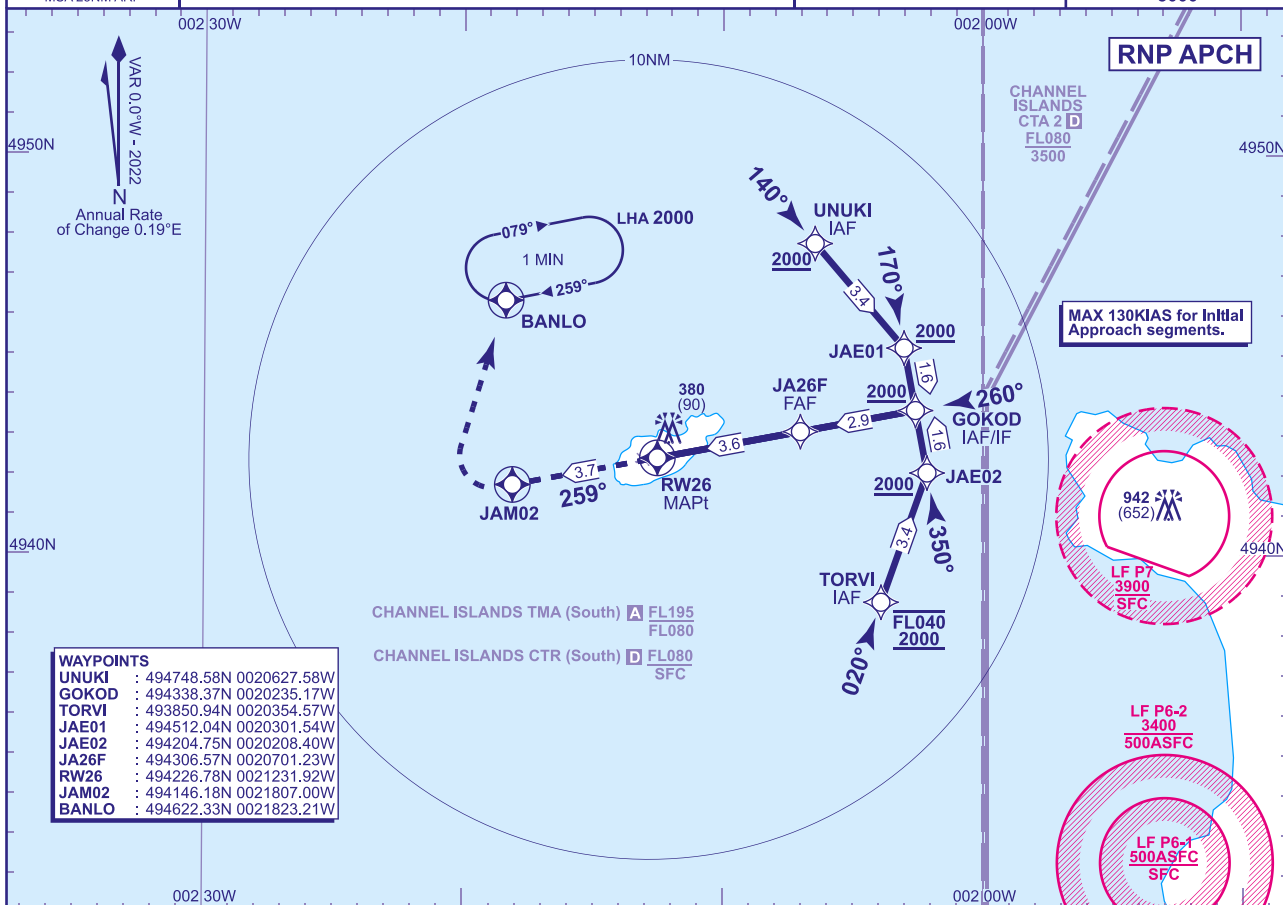


**ALDERNEY
RNP
RWY 26
(ACFT CAT A,B)**

APP 128.655	GUERNSEY APPROACH	AD ELEVATION 290
TWR 125.355	ALDERNEY TOWER	THR ELEVATION 290
130.505	ALDERNEY GROUND	OBSTACLE ELEVATION 942 AMSL (652) (ABOVE THR)
		BEARINGS ARE MAGNETIC

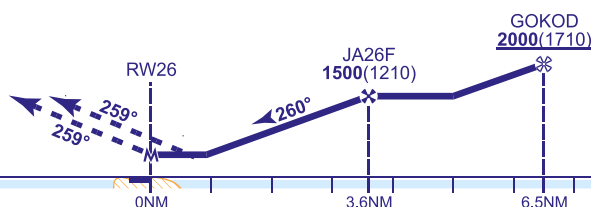
EGNOS	CH 46392 E26A
TRANSITION ALTITUDE	
5000	



RECOMMENDED PROFILE LPV - VERTICAL PATH ANGLE 3.0° (LNAV 5.2%), 320FT/NM

NM to RW26	3	2	1
ALT(HGT)	1300(1010)	980(690)	650(360)

MAPt (LNAV): RW26
Climb straight ahead to **JAM02**, then turn right and continue climb to **2000** to hold at **BANLO**; or as directed.



Aircraft Category		A	B	Rate of descent	G/S KT	160	140	120	100	80
OCA (OCH)	LPV	590(300)	590(300)		FT/MIN	850	740	640	530	420
	LNAV	630(340)	630(340)							
VM(C)OCA (OCH AAL)	Total Area	690(400)	790(500)							

NOTES 1 Caution - eastern extremes of procedure are close to the boundary of control zone and prohibited and restricted areas.
2 From the hold pilots should expect to route direct from the outbound leg of the hold to UNUKI.

CHANGE (4/25): SPECIFICATION CHANGE.